

SELF-LIGATING BRACKET SYSTEM

A



SLX™ A-2
Self-Ligating Brackets

Motion™ A-10
Class II Correction Appliance

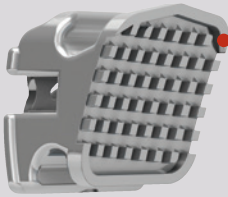


INTRODUCING THE *CARRIERE*® SLX BRACKET SYSTEM

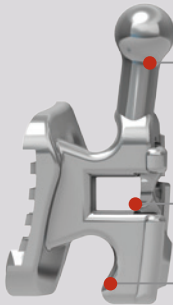
The New Standard in Performance. The New Reality in Value.

It's the most exciting news in orthodontic appliance design in years. Introducing the completely re-engineered *SLX* Self-Ligating Appliance System. The *SLX* Bracket System resets the standards for excellence and performance in passive self-ligating brackets with numerous clinician driven innovations for clinical effectiveness and efficiency.

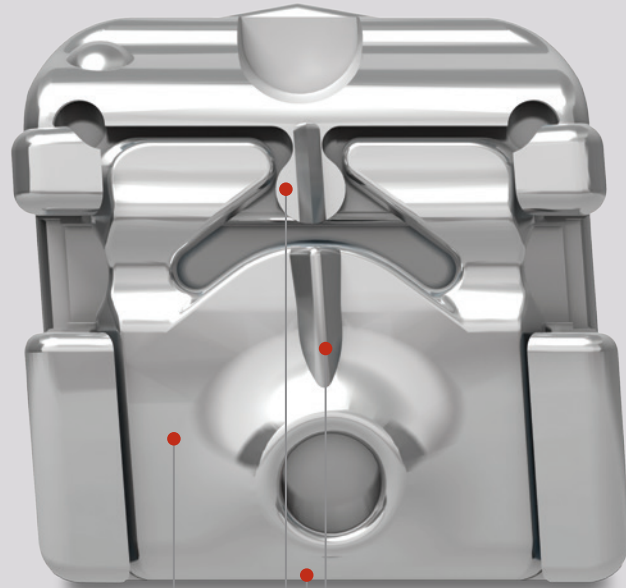
Discover the many innovative features of the *SLX* Bracket System—all designed to meet your ultimate goals—effective case management, optimal tooth positioning, and meticulous finishes.



- **Adhesive Guard Rail™ (AGR) Technology** directs adhesive mesial-distal for faster, easier cleanup



- **Deeper tie wings** for easy, secure chain and ligature use
- **Reduced slot depth** for more precise tooth control
- **Fully-integrated hooks** eliminate the need for drop-in auxiliaries

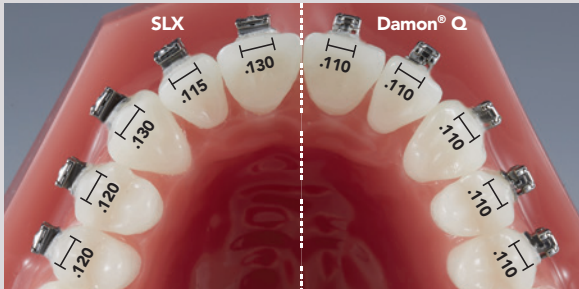


- **Smooth, secure, and easy-to-operate slides** with audible and tactile cues
- **More vertical and horizontal cues** for faster, accurate placement
- **Sure-Lok™ Clip** for hygienic access and reliable functionality
- **Occlusal opening, uppers and lowers**, to avoid gingival impingement

CARRIERE®
Shifting the way you think about orthodontics.

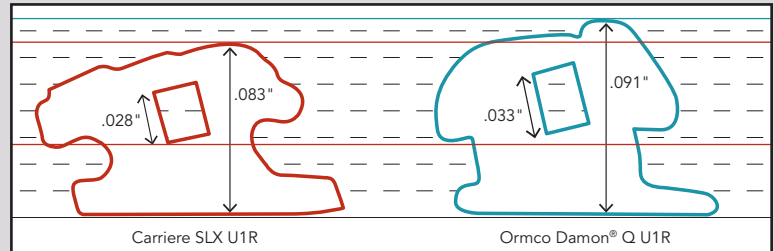
SLX BRACKET SYSTEM

PERFORMANCE AND FINISHING



Tooth specific bracket widths for improved rotational control

EFFICIENCY – A MATTER OF TIME



Lower profile design for patient comfort and less occlusal interference

YOUR PEERS ARE RAVING ABOUT THE NEW SLX BRACKET!

"The switch from Damon to SLX has been a big win in simplicity, cost, chair time, and treatment outcomes."

– John Stieber, DDS, PS

"SLX Brackets include important design enhancements to improve tooth control and as such, will enable clinicians to take their SL cases to the next level."

– David Paquette, DDS, MS, MSD

"The SLX Bracket System has the features to provide clinicians with greater efficiency, better finishes, and a lower price...I couldn't be happier."

– Michael Ragan, DDS

PATIENT MATERIALS YOUR STAFF WILL LOVE!

SLX Patient Education Brochure

Item Number 999-256

Pack of 15

Get your patients excited about the advantages of *Carriere SLX* treatment. Features before and after photos of actual patients.

15X Model of the SLX Bracket

Item Number 631-713X

Carriere System Educational DVD

Item Number 999-208

Maximize your patient's consultation experience by clearly demonstrating how *SLX* Brackets and the *Motion* Class II Appliance work. You'll find easily accessible images, videos, animations, and brochures that you can print for patients to take home.



Typodont with Carriere SLX Brackets

Item Number 631-713



SLX “Zero Force” Opening Tool

Item Number 201-506

It’s simply easy to open and close *SLX* Brackets with the completely new *SLX* Tool. You’ll love how it:

- Seats the wire into the base of the slot to allow ease of door opening
- Provides patient comfort during door opening
- Provides a reciprocal force so that no forces are applied to the bracket
- Operates like a simple tweezer

SLX SELF-LIGATING BRACKETS
ALL PRESCRIPTIONS* , **

	CENTRALS			LATERALS			CUSPIDS			1ST BICUSPIDS			2ND BICUSPIDS		
	TRQ.	ANG.	ANTI-ROT.	TRQ.	ANG.	ANTI-ROT.	TRQ.	ANG.	ANTI-ROT.	TRQ.	ANG.	ANTI-ROT.	TRQ.	ANG.	ANTI-ROT.
MAXILLARY															
Optimized Damon High Torque	+17°	+4°	0°	+10°	+8°	0°	+7°	+8°	0°	-7°	0°	0°	-7°	0°	0°
Optimized Damon Standard Torque	+12°	+5°	0°	+8°	+9°	0°	0°	+6°	0°	-7°	0°	0°	-7°	0°	0°
McLaughlin, Bennett, and Trevisi	+17°	+4°	0°	+10°	+8°	0°	-7°/0°	+9°/+6°	0°	-7°	0°	0°	-7°	0°	0°
Roth	+12°	+5°	0°	+8°	+9°	0°	-2°	+9°	+4M°	-7°	0°	+2D°	-7°	0°	+2D°
MANDIBULAR															
Optimized Damon High Torque	-1°	0°	0°	-1°	0°	0°	+7°	+4°	0°	-12°	+2°	0°	-17°	+2°	0°
Optimized Damon Standard Torque	-1°	0°	0°	-1°	0°	0°	0°	+5°	0°	-12°	+2°	0°	-17°	+2°	0°
McLaughlin, Bennett, and Trevisi	-6°	0°	0°	-6°	0°	0°	-6°/0°	+4°/+5°	0°	-12°	+2°	0°	-17°	+2°	0°
Roth	-1°	0°	0°	-1°	0°	0°	-11°	+5°	+2M°	-17°	+2°	+4D°	-22°	+2°	+4D°

* Call for availability.

**Ortho Organizers’ prescription does not imply endorsement by the doctor(s).

SELF-LIGATING BRACKET SYSTEM

SLX BRACKET SYSTEM

SLX SELF-LIGATING BRACKETS

ALL KITS* (5x5)

				ITEM NUMBERS	
Rx	OPTION	QTY. OF SETS.	TOTAL BRACKETS	.018	.022
Optimized Damon High Torque	U/L 5x5 kit with no hooks	1	20	–	713-397HT
	U/L 5x5 kit with hooks on 3's	1	20	–	713-398HT
	U/L 5x5 kit with hooks on 3's, 4's, 5's	1	20	–	713-399HT
Optimized Damon Standard Torque	U/L 5x5 kit with no hooks	1	20	–	713-397ST
	U/L 5x5 kit with hooks on 3's	1	20	–	713-398ST
	U/L 5x5 kit with hooks on 3's, 4's, 5's	1	20	–	713-399ST
McLaughlin, Bennett, and Trevisi	U/L 5x5 kit with no hooks	1	20	–	713-397MC
	U/L 5x5 kit with hooks on 3's	1	20	–	713-398MC
	U/L 5x5 kit with hooks on 3's, 4's, 5's	1	20	–	713-399MC
Roth	U/L 5x5 kit with no hooks	1	20	–	713-397
	U/L 5x5 kit with hooks on 3's	1	20	–	713-398
	U/L 5x5 kit with hooks on 3's, 4's, 5's	1	20	–	713-399

*Ortho Organizers' prescription does not imply endorsement by the doctor(s).

SELF-LIGATING BRACKET SYSTEM
SLX BRACKET SYSTEM

SLX SELF-LIGATING BRACKETS (10 PER PACK)
OPTIMIZED DAMON PRESCRIPTIONS* (10 PER PACK)

								ITEM NUMBERS	
	DESC	COLOR-CODE	TOOTH#	VARIABLE	TRQ.	ANG.	ANTI-ROTATION	.022 R	.022 L
MAXILLARY									
Centrals	-	Black	U1	Super	+22°	+5°	0°	713-305-10	713-306-10
	-	Black	U1	High	+17°	+4°	0°	713-309-10	713-310-10
	-	Black	U1	Standard	+12°	+5°	0°	713-307-10	713-308-10
Laterals	-	Pink	U2	Super	+14°	+9°	0°	713-319-10	713-320-10
	-	Pink	U2	High	+10°	+8°	0°	713-327-10	713-328-10
	-	Pink	U2	Standard	+8°	+9°	0°	713-323-10	713-324-10
Cuspids	-	Green	U3	High	+7°	+8°	0°	713-349-10	713-350-10
	Hook	Green	U3	High	+7°	+8°	0°	713-349HK-10	713-350HK-10
	-	Green	U3	Standard	0°	+6°	0°	713-355-10	713-356-10
	Hook	Green	U3	Standard	0°	+6°	0°	713-355HK-10	713-356HK-10
	-	Green	U3	Low	-7°	+9°	0°	713-353-10	713-354-10
	Hook	Green	U3	Low	-7°	+9°	0°	713-353HK-10	713-354HK-10
Bicuspids	-	Purple	U4&5's	-	-7°	0°	0°	713-357-10	713-358-10
	Hook	Purple	U4&5's	-	-7°	0°	0°	713-357HK-10	713-358HK-10
MANDIBULAR									
Anteriors	-	Yellow	L1&2's	Super	+3°	0°	0°	713-333-10	713-333-10
	-	Yellow	L1&2's	High & Std	-1°	0°	0°	713-335-10	713-335-10
	-	Yellow	L1&2's	Low	-6°	0°	0°	713-337-10	713-337-10
Cuspids	-	Blue	L3	High	+7°	+4°	0°	713-363-10	713-364-10
	Hook	Blue	L3	High	+7°	+4°	0°	713-363HK-10	713-364HK-10
	-	Blue	L3	Standard & Low	0°	+5°	0°	713-373-10	713-374-10
	Hook	Blue	L3	Standard & Low	0°	+5°	0°	713-373HK-10	713-374HK-10
1st Bicuspids	-	Gray	L4	-	-12°	+2°	0°	713-387-10	713-388-10
	Hook	Gray	L4	-	-12°	+2°	0°	713-387HK-10	713-388HK-10
2nd Bicuspids	-	White	L5	-	-17°	+2°	0°	713-391-10	713-392-10
	Hook	White	L5	-	-17°	+2°	0°	713-391HK-10	713-392HK-10

* Ortho Organizers' prescription does not imply endorsement by the doctor(s).

** Call for availability.

SELF-LIGATING BRACKET SYSTEM

SLX BRACKET SYSTEM

SLX SELF-LIGATING BRACKETS (10 PER PACK)

MCLAUGHLIN, BENNETT, AND TREVISI PRESCRIPTIONS*

							ITEM NUMBERS	
	DESC.	COLOR-CODE	TOOTH#	TRQ.	ANG.	ANTI-ROTATION	.022 R	.022 L
MAXILLARY								
Centrals	–	Black	U1	+17°	+4°	0°	713-309-10	713-310-10
Laterals	–	Pink	U2	+10°	+8°	0°	713-327-10	713-328-10
Cuspids	–	Green	U3	-7°	+9°	0°	713-353-10	713-354-10
	Hook	Green	U3	-7°	+9°	0°	713-353HK-10	713-354HK-10
	–	Green	U3	0°	+6°	0°	713-355-10	713-356-10
	Hook	Green	U3	0°	+6°	0°	713-355HK-10	713-356HK-10
Bicuspid	–	Purple	U4&5's	-7°	0°	0°	713-357-10	713-358-10
	Hook	Purple	U4&5's	-7°	0°	0°	713-357HK-10	713-358HK-10
MANDIBULAR								
Anteriors	–	Yellow	L1&2's	-6°	0°	0°	713-337-10	713-337-10
Cuspids	–	Blue	L3	-6°	+4°	0°	713-371-10	713-372-10
	Hook	Blue	L3	-6°	+4°	0°	713-371HK-10	713-372HK-10
	–	Blue	L3	0°	+5°	0°	713-373-10	713-374-10
	Hook	Blue	L3	0°	+5°	0°	713-373HK-10	713-374HK-10
1st Bicuspid	–	Gray	L4	-12°	2°	0°	713-387-10	713-388-10
	Hook	Gray	L4	-12°	2°	0°	713-387HK-10	713-388HK-10
2nd Bicuspid	–	White	L5	-17°	2°	0°	713-391-10	713-392-10
	Hook	White	L5	-17°	2°	0°	713-391HK-10	713-392HK-10

*Ortho Organizers' prescription does not imply endorsement by the doctor(s).

SLX SELF-LIGATING BRACKETS (10 PER PACK)
ROTH PRESCRIPTION*

							ITEM NUMBERS			
	DESC.	COLOR-CODE	TOOTH#	TRQ.	ANG.	ANTI-ROTATION	.018 R	.018 L	.022 R	.022 L
MAXILLARY										
Centrals	–	Black	U1	+12°	+5°	0°	713-207-10	713-208-10	713-307-10	713-308-10
Laterals	–	Pink	U2	+8°	+9°	0°	713-223-10	713-224-10	713-323-10	713-324-10
Cuspids	–	Green	U3	-2°	+9°	4°M	713-251-10	713-252-10	713-351-10	713-352-10
	Hook	Green	U3	-2°	+9°	4°M	713-251HK-10	713-252HK-10	713-351HK-10	713-352HK-10
Bicuspid	–	Purple	U4&5's	-7°	0°	2°D	713-259-10	713-260-10	713-359-10	713-360-10
	Hook	Purple	U4&5's	-7°	0°	2°D	713-259HK-10	713-260HK-10	713-359HK-10	713-360HK-10
MANDIBULAR										
Anteriors	–	Yellow	L1&2's	-1°	0°	0°	713-235-10	713-235-10	713-335-10	713-335-10
Cuspids	–	Blue	L3	-11°	+5°	2°M	713-267-10	713-268-10	713-367-10	713-368-10
	Hook	Blue	L3	-11°	+5°	2°M	713-267HK-10	713-268HK-10	713-367HK-10	713-368HK-10
1st Bicuspid	–	White	L4	-17°	+2°	4°D	713-289-10	713-290-10	713-389-10	713-390-10
	Hook	White	L4	-17°	+2°	4°D	713-289HK-10	713-290HK-10	713-389HK-10	713-390HK-10
2nd Bicuspid	–	Red	L5	-22°	+2°	4°D	713-293-10	713-294-10	713-393-10	713-394-10
	Hook	Red	L5	-22°	+2°	4°D	713-293HK-10	713-294HK-10	713-393HK-10	713-394HK-10

*Ortho Organizers' prescription does not imply endorsement by the doctor(s).

SLX BRACKET SYSTEM

CARRIERE SLX BRACKET SYSTEM RECOMMENDED ARCHWIRES

	Cu Nitanium 27°C Archwires	Cu Nitanium 35°C Archwires	CNA Beta III Archwires	Bio-Kinetix Thermal Nitanium Archwires
	 D-LX Shape Universal (Damon Shape) w/ EZ Stops	 D-LX Shape Universal (Damon Shape) w/ EZ Stops	 D-LX Shape Universal (Damon Shape)	 D-LX Shape Universal (Damon Shape)
	Single Pack 10/pack	Single Pack 10/pack	Single Pack 10/pack	Single Pack 10/pack
.013	103-191C	—	—	—
.014	103-192C	—	—	—
.014 x .025	103-195C	—	—	—
.017 x .025	—	103-200C	—	—
.019 x .025	—	103-201C	103-120C	—
.021 x .027	—	—	—	103-123C

SLX Cu Nitanium Archwires with the Innovative EZ Stops System*

This new crimpable archwire stop delivery system provides smooth positioning. The unique holder allows clinicians to quickly position the tube stop in a precise location for crimping on the archwire. Threading a crimpable tube stop onto an archwire is quick and easy. No more lost stops!

- No more frustration with sticky sliding
- Easy-to-see
- Easy-to-grip
- Pre-threaded on each archwire
- Sterilizable by steam autoclave

Description/Size	Item Numbers
EZ Stops Small (.019"), Qty 20	430-101
EZ Stops Large (.030"), Qty 20	430-102



* Call for availability.

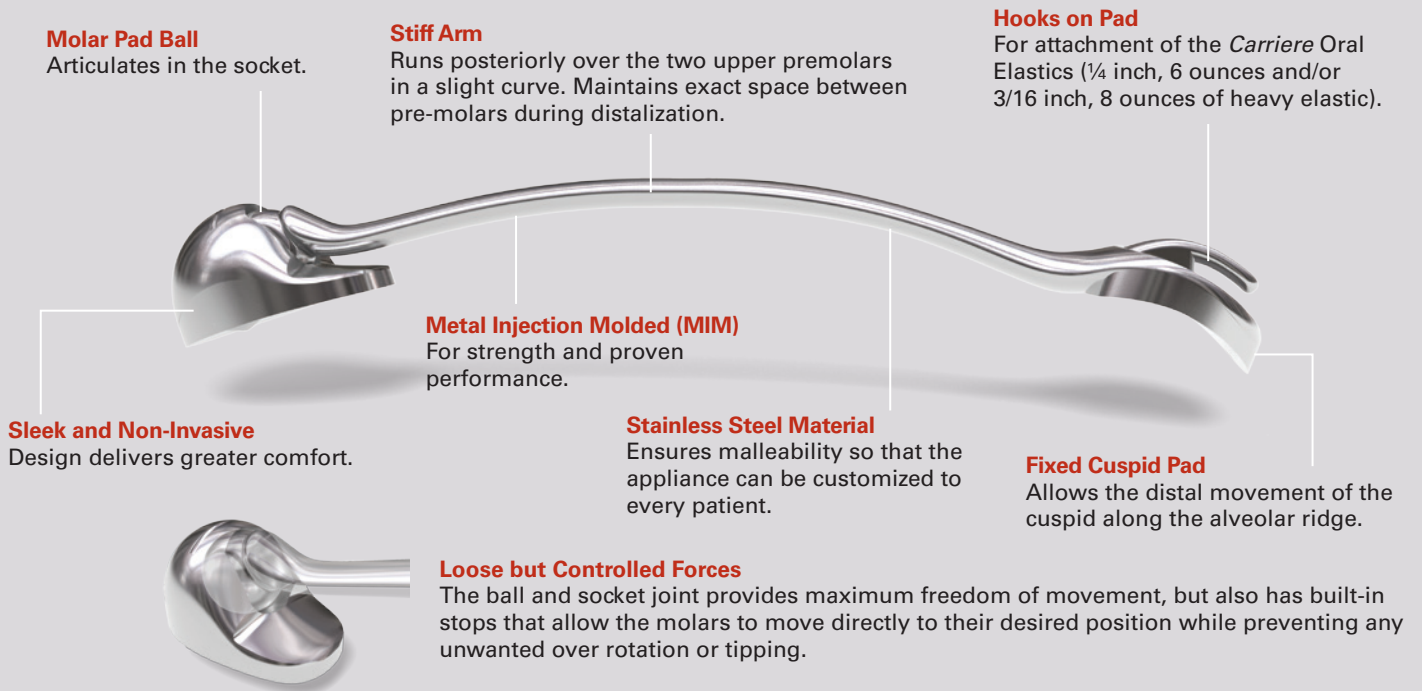


CARRIERE MOTION CLASS II APPLIANCE

Turn Class II Into Simple Class I Patients

A huge move in the right direction for orthodontics.

To limit extractions and to turn difficult Class II patients into simpler Class I patients is a dream come true for you and your patients. With its sleek, aesthetic, and non-invasive design, the *Motion* Class II Correction Appliance provides greater comfort and shortens treatment time by up to four months. Delivering a natural, gentle, and uniform force for distal molar movement with controlled rotation and tipping correction before brackets or other appliances are placed, the *Motion* Appliance solves complex problems almost effortlessly.



The Motion Philosophy

Fast.

Shortens overall treatment time by up to four months as it treats Class II correction at the beginning of the orthodontic treatment, when there are no competing forces in the mouth caused by brackets or other appliances. A Class II correction can usually be completed in an average of 3-4 months.

Natural.

Mimicking a human hip ball-socket joint, the *Motion* Appliance allows the first molar to rotate and upright in its natural and correct finishing position, producing a continuous, natural, and uniform force for distal molar movement with controlled rotation and tipping correction. Built-in stops engineered in the appliance prevent the molars from over-rotating and the crowns from distal tipping. The *Motion* Appliance's low forces are biologically compatible during the Class II treatment.

Gentle.

The low force of the *Motion* Appliance is gentle on your patients, and its low profile design is very comfortable to wear. By treating the Class II platform first, it simplifies the entire treatment for you, and provides greater comfort for your patients.

GOING FROM CLASS II TO CLASS I HAS NEVER BEEN EASIER.

The *Motion* is a direct bond appliance that attaches to the maxillary canine and first permanent molar, providing a simple procedure for turning complex Class II patients into a Class I platform. Once a Class I condition is achieved, malocclusions become easier to treat and can be finished with your preferred orthodontic technique. Since there are no competing forces in the mouth when using this appliance, average Class II correction can usually be achieved in just three to four months.

- Eliminates wire changes and the distorting collateral forces that appear with every wire activation used in traditional methods.
- Minimizes root resorption.
- Patients are treated faster with less discomfort.
- High level of patient compliance as the appliance is aesthetically pleasing, and used during the initial phase of treatment when patient's motivation is still high.

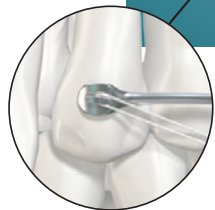


Fig A
Motion Appliance with *Carriere* Oral Elastic attached to hook on the cuspid pad. Class I Platform is present when a cuspid occlusion, in which centric relation coincides with centric occlusion, and the molar occlusal relationships are a perfect Class I.

How it Works.

- Corrects the posterior occlusion to an ideal Class I platform first by rotating and uprighting the maxillary first molars while distalizing the posterior segment, from canine or premolar to molars, into a perfect occlusion.
- Simultaneously produces a light, uniform force for distal molar movement.
- Independently moves each posterior segment, from canine or premolar to molar, as a unit.
- Used at the beginning of treatment when there are no competing forces in the mouth allows the distalization of the molars and premolars from 3 to 6 mm range, on average.

Indications.

- Most effective in treating Class II symmetrical and asymmetrical malocclusions without the need for extractions.
- May also be used in many Class I patients with mesially positioned maxillary molars.
- Growing patients are ideal, but adults may be treated as well.
- Mixed dentition Class II patients with fully erupted molars are candidates for Phase 1 treatment to establish a Class I platform.

EASE OF PLACEMENT.

The *Motion* Appliance is placed on the maxillary arch, but requires a solid and consistent source of anchorage in the mandibular arch to avoid protrusion of the lower incisors (a lower Essix Appliance with direct bonded tubes on lower molars, a passive lingual arch, a full mandibular fixed appliance, or mini-screws). Once the appliance is bonded, the *Carriere* Oral Elastics are attached from the mandibular molar to the hook of the maxillary cuspid of the *Motion* Appliance to activate.

The Movement Created by the Motion Appliance.

Bodily distalizes the maxillary posterior segments as a block while correcting upper first molar rotation and uprighting. The posterior portion of the *Motion* Appliance accomplishes three types of molar movement:

1. Uprighting of the crown, if it is mesially inclined (*Fig. 01*). Once the molar has been uprighted, the articulation of the ball with the socket prevents distal tipping.
2. Distal rotation around the palatal root. When the maxillary first molar is mesially rotated around the palatal root, the molar occlusion may appear

to be Class II, while in reality it is Class I with the canines in a cusp-to-cusp relationship (*Fig. 02*). When the molar has been de-rotated, the shoulder of the posterior base contacts the mesial arm to prevent over-rotation.

3. Distal displacement without concurrent distal tipping of the crown.



Fig 01 – Provides controlled molar rotation and uprighting.

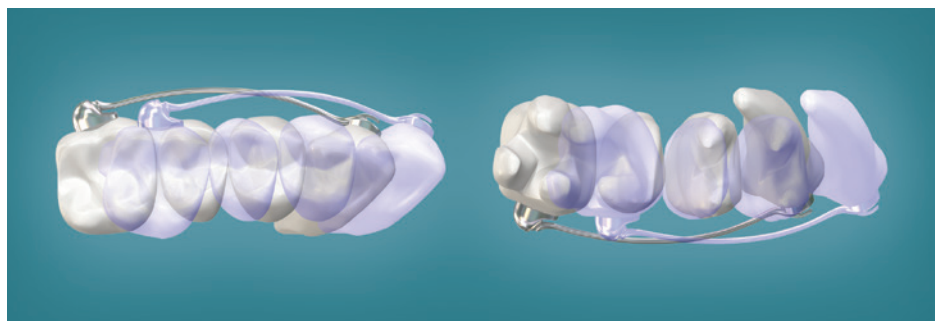


Fig 02 – The maxillary molars are distalized and rotated, providing a platform for maxillary canines to occlude in a Class I relationship.



Fig 03 – With mesially rotated molars, cuspids cannot occlude in Class I relationship.



Fig 04 – Independently moves each posterior segment, from canine or premolar to molar, as a unit.

