



# Danville

## FULLY AUTOCLAVABLE

### MICROETCHER IIA™

INTRA-ORAL SANDBLASTER

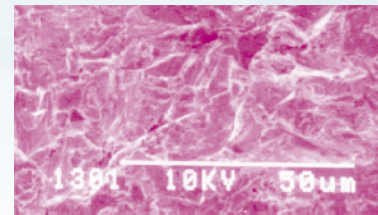
The introduction of the original Microetcher™ intraoral sandblaster changed chairside bonding forever. The advent of the Microetcher II allowed for precision microroughening and featured a removable and autoclavable nozzle. We've made major internal improvements to the Microetcher II in order to afford enhanced performance at lower pressure levels.

The patented nozzle configuration is slimmer in profile allowing greater visibility during intraoral use, can rotate 3600 and is interchangeable with the Microetcher II nozzle options. The Microetcher IIA is designed to limit abrasive use, in order to minimize dust in your operatory.

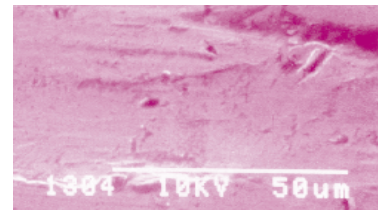
- Fully autoclavable body and nozzle.
- Compatible with Microetcher II nozzle options.
- Effective at pressures as low as 45psi.
- 30% reduction in abrasive use.
- Ergonomically designed nozzle to improve intraoral vision.
- Improves bond strength up to 400%.
- Precise control for intraoral use.
- Rapid bonding prep with failures greatly reduced.
- Ideal for orthodontic and other appliances.



Sandblasted Dental Alloy 800X



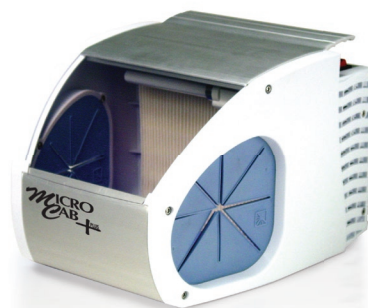
Bur Roughened Dental Alloy 800X



### MACROCAB™

SELF CONTAINED DUST CABINET

- Featuring built in dust collection/filtration system
- Easy to clean
- Filter lasts for years
- Quiet filter and fan
- Highest quality, heavy gauge aluminum, baked enamel finish

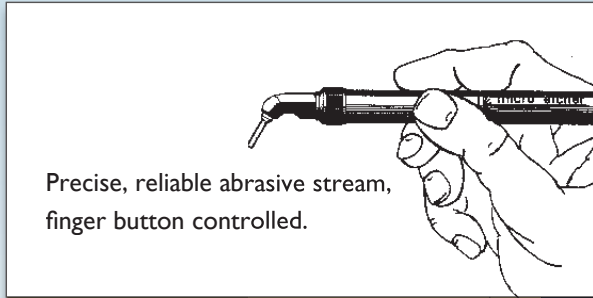


### MICROCAB+™

SELF-CONTAINED DUST CABINET

- Effectively contains dust and debris from etching or cleaning process
- Bright, fluorescent light
- Quiet filter and fan
- Small footprint
- Wall mountable

ROTATES 360°



## INCREASE BOND STRENGTH UP TO 400% WITH THE MICROETCHER™ IIA, II AND ERC

### TYPICAL SURFACE ROUGHENING APPLICATIONS INCLUDE:

- Crown cementation with maximum bonding and fast, easy cleaning for recementation.
- Intraoral porcelain and composite repair. Porcelain veneer bonding prep.
- Pit and fissure prep and removal of incipient decay.
- Amalgam bonding. Enamel bond enhancement. Acrylic facing replacement.
- Posts, inlays and onlays prep; occlusal adjustments.
- Metal crowns to check for precise fit and occlusion.
- Prepare attachments for Maryland bridges.
- Clean and prepare orthodontic brackets, bands.
- Relining and repair of metal dentures.

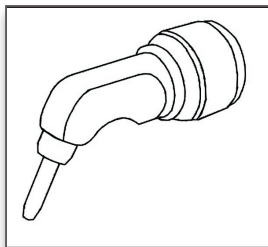
### MICROETCHER II NOZZLE COMPATIBLE WITH THE MICROETCHER IIA

Nozzle Angle: 60°

Tip Size: .032 Pit & Fissure Prep

.048

360° Rotatable Nozzle



Microetcher IIA nozzle design  
with slimmer profile allowing  
greater intraoral visibility.

## ORDERING INFORMATION

### MICROETCHERS & ACCESSORIES

22005 Microetcher IIA Kit

Microetcher IIA, 60° Nozzle, 10Ft. Air Line, Two Abrasive Jars, and Instructions. Minimum Pressure of 45 PSI (2.5 Bar) Air Supply Is Required.

### Nozzle Options:

201802-00 60° with .048 Tip

### Compatible with Microetcher II & IIA

186113 60° with .032 Tip

22000 Microetcher II

### ABRASIVES

#### Aluminum Oxide

15301	50 Micron, 1 Lb	White
15201	90 Micron, 1 Lb	Tan
80042	27 Micron, 1 Lb	White
16101	Glass Beads 90 Micron, 1 Lb	
14001	Orthoprophy SA-85 85 Micron	

### THE SAND-TRAP

22006 Package (15)

## CONSULT OUR PRICE SHEET FOR PRICING AND ADDITIONAL PRODUCT LISTINGS.

ALL DANVILLE PRODUCTS CARRY A  
RISK-FREE, 30-DAY, UNCONDITIONAL  
MONEY-BACK GUARANTEE.



**Danville**

3420 Fostoria Way Ste. A-200  
(800) 827-7940  
(925) 973-0710  
Fax (925) 973-0764