

# NeoCrystal Plus™

Sapphire Ceramic Bracket System  
The “Crystal” Clear Advantage



# NeoCrystal Plus

## Sapphire Ceramic Bracket System

Developed to provide unparalleled performance and crystal clear transparency, the NeoCrystal Plus™ Sapphire Ceramic Bracket is manufactured from a single crystal sapphire, one of the hardest and clearest materials found in nature. The result is an aesthetic bracket that allows the natural tooth tone to show through, regardless of the shade, for a virtually invisible appearance. Offer your patients the NeoCrystal Plus Sapphire Bracket System and enjoy both high performance and exceptional patient satisfaction.

On par with metal brackets and predictable debonding, the NeoCrystal Plus Sapphire Bracket System delivers the ultimate results you and your patients expect.



### Designed for Patient Comfort

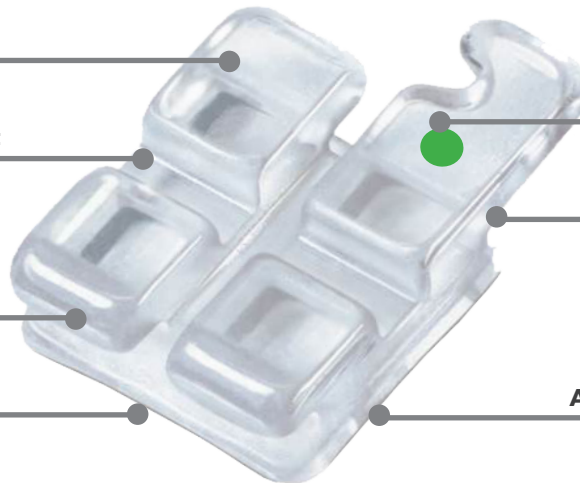
**Pure monocrystalline material for a transparent, natural appearance**

**Stain resistant throughout treatment**

**Heat polished for a remarkably smooth surface**

**Outstanding comfort with a low profile**

**Rounded corners and Single hook offers a less bulky feel than universal hooks**



### Enhanced Performance

**Heat treated for superior strength**

**Removable color-code ID mark to ensure accurate placement**

**Reduced friction offers sliding mechanics comparable to metal brackets**

**Non-allergenic for sensitive patients**

**Anatomically contoured base for quick and easy bracket placement**

### All Rx\*

MAXILLARY	Centrals			Laterals			Cuspids			1st Bicuspids			2nd Bicuspids		
	TORQUE	ANG.	ANTI-ROTATION	TORQUE	ANG.	ANTI-ROTATION	TORQUE	ANG.	ANTI-ROTATION	TORQUE	ANG.	ANTI-ROTATION	TORQUE	ANG.	ANTI-ROTATION
Roth	+11	+5	0	+8	+9	0	-2	+8	0	-7	0	0	-7	0	0
McLaughlin, Bennett, and Trevisi (0° Torque)	+17	+4	0	+10	+8	0	0	+8	0	-7	0	0	-7	0	0
MANDIBULAR	TORQUE	ANG.	ANTI-ROTATION	TORQUE	ANG.	ANTI-ROTATION	TORQUE	ANG.	ANTI-ROTATION	TORQUE	ANG.	ANTI-ROTATION	TORQUE	ANG.	ANTI-ROTATION
Roth	0	0	0	0	0	0	-11	+7	0	-17	0	0	-21	0	0
McLaughlin, Bennett, and Trevisi (0° Torque)	-6	0	0	-6	0	0	0	+3	0	-12	+2	0	-17	+2	0

### Kits\*

Rx	DESCRIPTION	QTY OF SETS	TOTAL BRACKETS	ITEM NUMBERS	
				.018	.022
Roth	U/L 5x5 Kit with Hooks on 3's, Quick Pac	1	20	715-298Q	715-398Q
	U/L 5x5 Kit with Hooks on 3's, 4's, 5's Quick Pac	1	20	715-299Q	715-399Q
McLaughlin, Bennett, and Trevisi (0° Torque)	U/L 5x5 Kit with Hooks on 3's, Quick Pac	1	20	715-098MCQ	715-198MCQ
	U/L 5x5 Kit with Hooks on 3's, 4's, 5's Quick Pac	1	20	715-099MCQ	715-199MCQ

\*Ortho Organizers prescription does not imply endorsement by the doctor(s).



### Patient Comfort

NeoCrystal Plus Sapphire Bracket has been diamond and heat polished to produce rounded, smooth corners for uncompromised patient comfort. The low profile provides comfort that patients will appreciate.



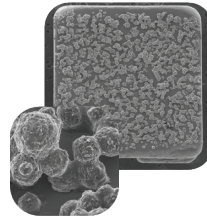
### Patient Aesthetics

Made from pure monocrystalline sapphire, the NeoCrystal Plus Sapphire Bracket System provides outstanding aesthetics with the highest transparency available. Nearly invisible against any tooth shade and no staining so it stays crystal clear.



### Bond Strength

The NeoCrystal Plus Sapphire Bracket bonding base is coated with zirconia spheres, creating millions of undercuts that allow the bracket adhesive to flow easily and adhere securely. Retention remains fixed during treatment, with predictable debonding at treatment completion.



### Contoured Base

The compound contoured bracket base allows for quick and easy bracket placement. The customized tooth-specific design conforms seamlessly with the tooth "like a glove" to increase bond strength and make bonding appointments quick and accurate.

## All Prescriptions\*

MAXILLARY	OPTION	COLOR-CODE	TOOTH #	TORQUE	ANG.	ANTI-ROTATION	ITEM NUMBERS			
							.018 R	.018 L	.022 R	.022 L
Centrals	–	●	U1	+11°	+5°	0°	715-203-5	715-204-5	715-303-5	715-304-5
	–	●	U1	+17°	+4°	0°	715-205-5	715-206-5	715-305-5	715-306-5
Laterals	–	●	U2	+8°	+9°	0°	715-221-5	715-222-5	715-321-5	715-322-5
	–	●	U2	+10°	+8°	0°	715-223-5	715-224-5	715-323-5	715-324-5
Cuspids	Hook	●	U3	-2°	+8°	0°	715-251HK-5	715-252HK-5	715-351HK-5	715-352HK-5
	Hook	●	U3	0°	+8°	0°	715-055HK-5	715-056HK-5	715-155HK-5	715-156HK-5
Bicuspids	–	●	U4 & 5's	-7°	0°	0°	715-259-5	715-260-5	715-359-5	715-360-5
	–	●	U4 & 5's	-7°	0°	0°	715-257-5	715-258-5	715-357-5	715-358-5
	Hook	●	U4 & 5's	-7°	0°	0°	715-259HK-5	715-260HK-5	715-359HK-5	715-360HK-5
	Hook	●	U4 & 5's	-7°	0°	0°	715-257HK-5	715-258HK-5	715-357HK-5	715-358HK-5
MANDIBULAR	OPITON	COLOR-CODE	TOOTH #	TORQUE	ANG.	ANTI-ROTATION	ITEM NUMBERS			
Anteriors	–	●	L1&2's	0°	0°	0°	715-233-5	715-233-5	715-333-5	715-333-5
	–	●	L1&2's	-6°	0°	0°	715-235-5	715-235-5	715-335-5	715-335-5
Cuspids	Hook	●	L3	-11°	+7°	0°	715-269HK-5	715-270HK-5	715-369HK-5	715-370HK-5
	Hook	●	L3	0°	+3°	0°	715-271HK-5	715-272HK-5	715-371HK-5	715-372HK-5
1st Bicuspids	–	●	L4	-17°	0°	0°	715-289-5	715-290-5	715-389-5	715-390-5
	–	●	L4	-12°	2°	0°	715-287-5	715-288-5	715-387-5	715-388-5
	Hook	●	L4	-17°	0°	0°	715-289HK-5	715-290HK-5	715-389HK-5	715-390HK-5
	Hook	●	L4	-12°	2°	0°	715-287HK-5	715-288HK-5	715-387HK-5	715-388HK-5
2nd Bicuspids	–	●	L5	-21°	0°	0°	715-293-5	715-294-5	715-393-5	715-394-5
	–	●	L5	-17°	2°	0°	715-291-5	715-292-5	715-391-5	715-392-5
	Hook	●	L5	-21°	0°	0°	715-293HK-5	715-294HK-5	715-393HK-5	715-394HK-5
	Hook	●	L5	-17°	2°	0°	715-291HK-5	715-292HK-5	715-391HK-5	715-392HK-5

\*Ortho Organizers prescription does not imply endorsement by the doctor(s).

## Roth Prescriptions\*

MAXILLARY	OPTION	COLOR-CODE	TOOTH #	TORQUE	ANG.	ANTI-ROTATION	ITEM NUMBERS			
							.018 R	.018 L	.022 R	.022 L
Centrals	–	●	U1	+11°	+5°	0°	715-203-5	715-204-5	715-303-5	715-304-5
Laterals	–	●	U2	+8°	+9°	0°	715-221-5	715-222-5	715-321-5	715-322-5
Cuspids	Hook	●	U3	-2°	+8°	0°	715-251HK-5	715-252HK-5	715-351HK-5	715-352HK-5
Bicuspids	–	●	U4 & 5's	-7°	0°	0°	715-259-5	715-260-5	715-359-5	715-360-5
	Hook	●	U4 & 5's	-7°	0°	0°	715-259HK-5	715-260HK-5	715-359HK-5	715-360HK-5
MANDIBULAR	OPTION	COLOR-CODE	TOOTH #	TORQUE	ANG.	ANTI-ROTATION	ITEM NUMBERS			
							.018 R	.018 L	.022 R	.022 L
Anteriors	–	●	L1&2's	0°	0°	0°	715-233-5	715-233-5	715-333-5	715-333-5
Cuspids	Hook	●	L3	-11°	+7°	0°	715-269HK-5	715-270HK-5	715-369HK-5	715-370HK-5
1st Bicuspids	–	●	L4	-17°	0°	0°	715-289-5	715-290-5	715-389-5	715-390-5
	Hook	●	L4	-17°	0°	0°	715-289HK-5	715-290HK-5	715-389HK-5	715-390HK-5
2nd Bicuspids	–	●	L5	-21°	0°	0°	715-293-5	715-294-5	715-393-5	715-394-5
	Hook	●	L5	-21°	0°	0°	715-293HK-5	715-294HK-5	715-393HK-5	715-394HK-5

## McLaughlin, Bennett, and Trevisi (0° Torque) Prescriptions\*

MAXILLARY	OPTION	COLOR-CODE	TOOTH #	TORQUE	ANG.	ANTI-ROTATION	ITEM NUMBERS			
							.018 R	.018 L	.022 R	.022 L
Centrals	–	●	U1	+17°	+4°	0°	715-205-5	715-206-5	715-305-5	715-306-5
Laterals	–	●	U2	+10°	+8°	0°	715-223-5	715-224-5	715-323-5	715-324-5
Cuspids	Hook	●	U3	0°	+8°	0°	715-055HK-5	715-056HK-5	715-155HK-5	715-156HK-5
Bicuspids	–	●	U4 & 5's	-7°	0°	0°	715-257-5	715-258-5	715-357-5	715-358-5
	Hook	●	U4 & 5's	-7°	0°	0°	715-257HK-5	715-258HK-5	715-357HK-5	715-358HK-5
MANDIBULAR	OPTION	COLOR-CODE	TOOTH #	TORQUE	ANG.	ANTI-ROTATION	ITEM NUMBERS			
							.018 R	.018 L	.022 R	.022 L
Anteriors	–	●	L1&2's	-6°	0°	0°	715-235-5	715-235-5	715-335-5	715-335-5
Cuspids	Hook	●	L3	0°	+3°	0°	715-271HK-5	715-272HK-5	715-371HK-5	715-372HK-5
1st Bicuspids	–	●	L4	-12°	2°	0°	715-287-5	715-288-5	715-387-5	715-388-5
	Hook	●	L4	-12°	2°	0°	715-287HK-5	715-288HK-5	715-387HK-5	715-388HK-5
2nd Bicuspids	–	●	L5	-17°	2°	0°	715-291-5	715-292-5	715-391-5	715-392-5
	Hook	●	L5	-17°	2°	0°	715-291HK-5	715-292HK-5	715-391HK-5	715-392HK-5

\*Ortho Organizers prescription does not imply endorsement by the doctor(s).

**HENRY SCHEIN®**  
ORTHODONTICS

**Rely on Us™**

The New Movement In Orthodontics™

For more information on our products and educational offerings, please contact us:

**HenryScheinOrtho.com** | Customer Service: **888.851.0533**

In the U.S.: **800.547.2000**

Outside the U.S.: **+(1) 760.448.8600**

Canada: CERUM **800.661.9567**

To email an order: **USASales@HenryScheinOrtho.com**

To email an order from outside the U.S.: **IntlOrders@OrthoOrganizers.com**

Ortho Organizers, Inc. 1822 Aston Ave. Carlsbad, CA 92008-7306 USA

