

THE RIGHT CHOICE FOR EFFICIENT
AND PREDICTABLE ORTHODONTICS

BIOMECHANICS & TADS HANDS-ON COURSE

SPEAKER: DR. GIORGIO IODICE

22nd July and 23rd July 2024
Pforzheim/Germany

Course outline

The introduction of the miniscrews and the temporary skeletal anchorage systems (TADs) has determined a real revolution in orthodontics, going to modify and simplify the setting and management of the anchor, one of the key points of orthodontic treatment.

However, after an initial enthusiasm linked to the possibility of avoiding the side effects related to Newton's third law, with the increase of experience the clinicians have been able and should have noted the limits of this method. The insertion of TADs in a vestibular or palatal inter-radial site is associated, in fact, with a reasonable possibility of failure. This datum, first clinical, now supported by scientific evidence, is linked to the intrinsic characteristics of the chosen site, bone quality and inter-radicular space.

All these factors can lead to a reduction in primary stability, with a consequent failure of TADs and important repercussions on the management of the anchor. Interference during the orthodontic movements of the TADs positioned in an inter-radicular position is of no less importance.

The use, instead, of the front portion of the palate for the insertion of TADs allows to overcome these and other limits, ensuring qualitatively and quantitatively better bone characteristics and, at the same time, the absence of interference during orthodontic movements. The use of palatal skeletal anchorage therefore offers clinicians new and promising opportunities, with the possibility of developing many devices, for the most varied orthodontic objectives.

The two-days course will be aimed at illustrating the advantages and disadvantages of buccal and palatal TADs, the characteristics, the simple clinical procedures, as well as the possible risks and complications. All the clinical phases and components necessary for the development of orthodontic skeletal anchoring devices will be analysed in detail. Finally, clinical examples will be analysed of the most varied orthodontic possibilities offered by this innovative method. Our goal will be to increase the knowledge and confidence of the clinician in the application of TADs, through the analysis of the most diverse clinical situations.

Finally, the PRACTICAL part of the course offers the possibility of simulating various procedures for the application and management of devices with skeletal anchorage.



Dr. Giorgio Iodice

Giorgio Iodice obtained his degree in Dentistry, his specialist degree in Orthodontics and his PhD in Oral Sciences from the University of Naples Federico II.

Giorgio received the Certificate of Excellence in Orthodontics in Italy (Italian Board of Orthodontics) and the E.B.O. (European Board of Orthodontics).

Since 2013, Giorgio has been a member of the IBO examining committee and of the SIDO Model Display examining committee since 2014.

He is assistant Clinical Professor at the University of Naples Federico II and an active member of SIDO, EOS, SIBOS, AIDOr and SIDA.

His main clinical and research interests are focused on the characteristics of treating adult patients, temporary anchorage devices (TADs) and the relationship between occlusion and temporomandibular disorders.

Giorgio has written several publications in national and international journals as well as a valued speaker at many congresses and universities.

Course outline

Day 1

THEORETICAL PART

- Anchorage in orthodontics
- Skeletal anchorage in orthodontics
- Clinical indications for the use of TADs in orthodontics
- TADs: Instruments Features, Guide to sites selection and insertion protocol
- Clinical procedures
- Risks and complications
- Presentation of clinical examples of the different clinical situations

PRACTICAL PART

- Insertion of TADs in resin cast
- Uprighting spring bending and activations

Tools that every participant should bring:

- Weingart plier (-501-0849)
- Mathieu ligating plier (-501-0705)
- Bird beak plier (-501-0402)
- Ligature Orthodontic cutter (599-0006)
- Distal cutter for archwires (-501-0807)
- Lingual Arch Forming Plier (-501-0822)

(It is also possible to buy the tools in the course.)

Day 2

THEORETICAL PART

- Anchorage in orthodontics
- Limits of conventional orthodontic anchorage
- Inter-radicular skeletal anchorage limits
- Ortho Easy PAL system
- Direct Insertion Protocol
- Indirect Insertion protocol: insertion guide and digital planning, advantages and limits.
- Clinical indications for the use of orthodontic systems with palatal skeletal anchorage
- Maxillary expansion with palatal skeletal anchorage
- Distalization with palatal skeletal anchorage: FROG and DistalSlider
- Mesialization and management of agenetic cases with palatal skeletal anchorage: MesialSlider
- Risks and complications
- Presentation of clinical examples of the different clinical situations

PRACTICAL PART

- Typodont simulation of orthodontic procedures for the use of orthodontic systems with palatal skeletal anchorage.

Meeting Schedule and price

22nd
July

Day 1 (morning)

-
- 09.00 h Welcome
- 09.15 h Theoretical part I
- 10.45 h Coffee Break
- 11.15 h Theoretical part II
- 12.45 h Lunch

22nd
July

Day 1 (afternoon)

-
- 13.30 h Visit to the FORESTADENT facility (in small groups, short technical demonstration, doctor participation)
- 14.30 h Coffee Break
- 15.00 h Practical Part
- 17.00 h End of course
- 19.00 h Get-together with dinner

23rd
July

Day 2 (morning)

-
- 09.00 h Theoretical part I
- 10.45 h Coffee Break
- 11.15 h Theoretical part II
- 12.45 h Lunch

23rd
July

Day 2 (afternoon)

-
- 13.30 h Theoretical part III
- 14.30 h Coffee Break
- 15.00 h Practical Part
- 17.00 h End of course

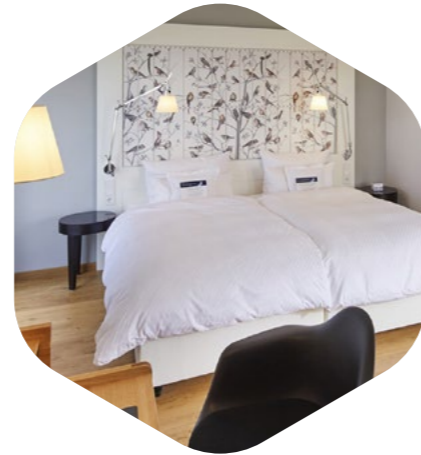
The number of participants is limited.
Course materials to the value of Euro 1600 incl.

€965,-
excl. VAT

Hotel recommendation



Parkhotel
Deimling Str. 32-36
75175 Pforzheim
www.parkhotel-pforzheim.de



Hotel Ibis
Bleichstr. 17
75173 Pforzheim
all.accor.com/hotel/A9F7/index.de.shtml



Gute Hoffnung
Dillsteiner Str. 9-11
75173 Pforzheim
www.hotel-gutehoffnung.com

Get-together with dinner



Neo Greek Grill Bar
Marktplatz 4
75175 Pforzheim



FORESTADENT
Bernhard Förster GmbH
Westliche Karl-Friedrich-Straße 151
75172 Pforzheim
Germany

Phone + 49 7231 459-0
Fax + 49 7231 459-102
info@forestadent.com



www.forestadent.com

Please send your registration by e-mail to karin.gentz@forestadent.com. The number of participants is limited – priority will be given based on the order of registration.

Company / Name _____

Address _____

City _____

State _____

Zip Code _____

Phone Number _____

Fax Number _____

E-mail _____

Remittance:

Deutsche Bank AG, Branch Pforzheim, Bank code: 666 700 06; Account: 0171 058;
BIC: DEUTDESM666; IBAN: DE83 6667 0006 0017 1058 00

Participant(s)

Date

Signature